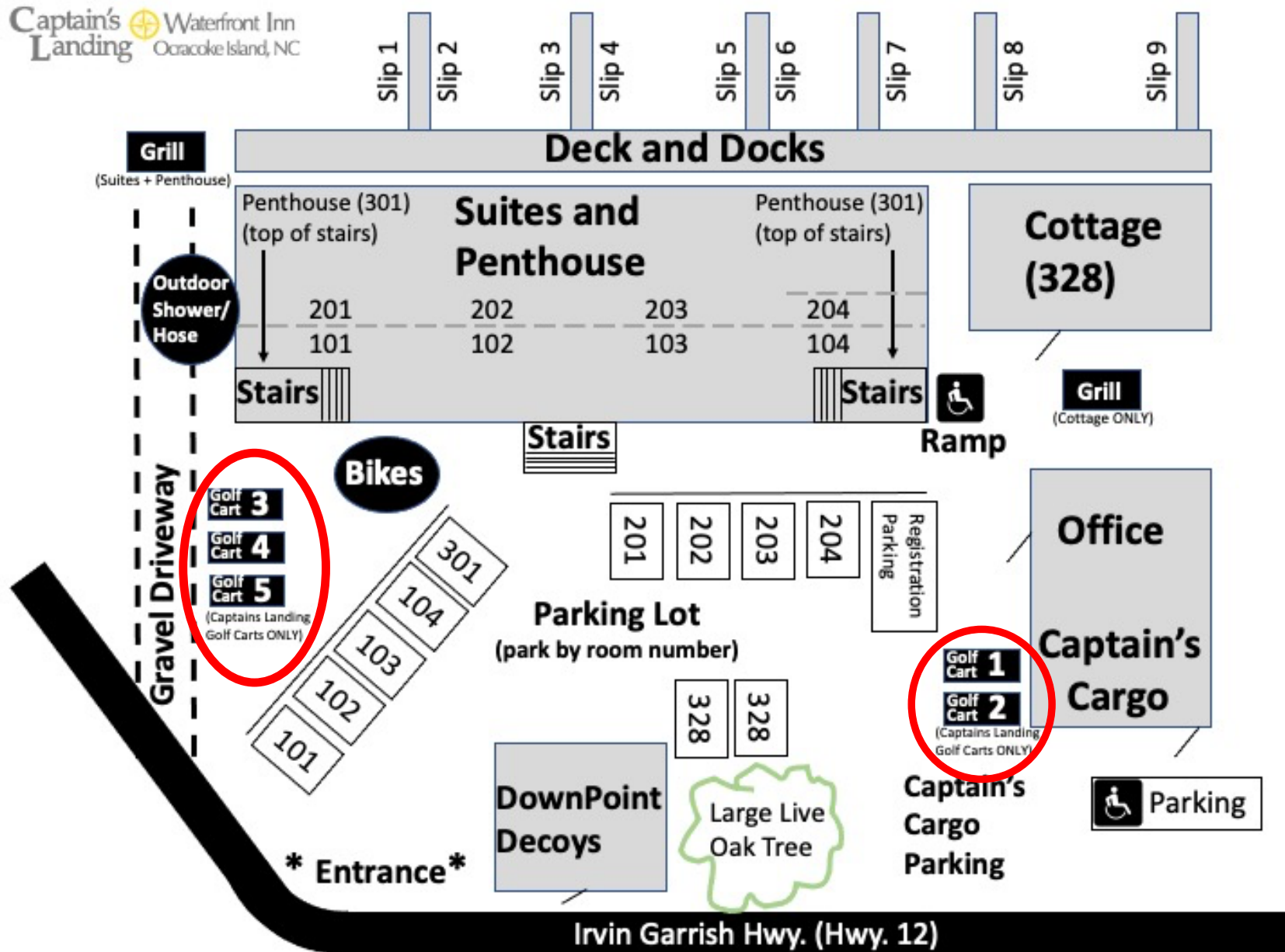


CAPTAIN'S LANDING WATERFRONT INN

GOLF CART RULES, PARKING MAP, & OPERATING INSTRUCTIONS

1. The safety and actions of all personnel associated with the Golf Cart are the responsibility of the lessee and that Captain's Landing, SL, LLC are not responsible for bodily injury accidents or any other liability associated with or while operating a leased Golf Cart.
2. The lessee assumes all responsibility for damage or theft of the Golf Cart while the Golf Cart is in his/her possession.
3. Operator(s) of golf cart must be 18 years of age and have in their possession a valid driver's license.
4. Golf Carts can carry a maximum of 4 people and all passengers must be seated at all times when cart is in motion.
5. Any child less than eight years of age and less than 80 pounds shall be secured in a child passenger restraint system in accordance with NCGS 20-137.1.
6. The Golf Cart shall be operated within the village of Ocracoke. Specifically, it shall not be driven north of the village limits.
7. Rules of the road shall be the same as a car utilizing lights, turn signals, horn and seatbelts as required. All equipment will be checked for proper operation by the lessee before operating the Golf Cart.
8. Horseplay, racing or other misuse of the Golf Cart will not be tolerated. Such behavior will be cause for immediate loss of rental privileges.
9. No occupant shall consume alcoholic beverages or have an open container of alcohol while the Golf Cart is in operation.
10. Any malfunctions, damage or traffic incidents shall be reported to Captain's Landing office as soon as practical, (252) 928-1999.
Golf Carts shall be parked at Captain's Landing as instructed by the office staff.
11. Golf Carts shall be returned within 24 hours for daily rentals and by 10am on the scheduled day of departure for weekly rentals.

PLEASE FIND & PARK CAPTAIN'S LANDING GOLF CARTS IN DESIGNATED SPOTS 1-5



IMPORTANT: Golf carts are not legally allowed north of village limits (roughly Howard's Pub).

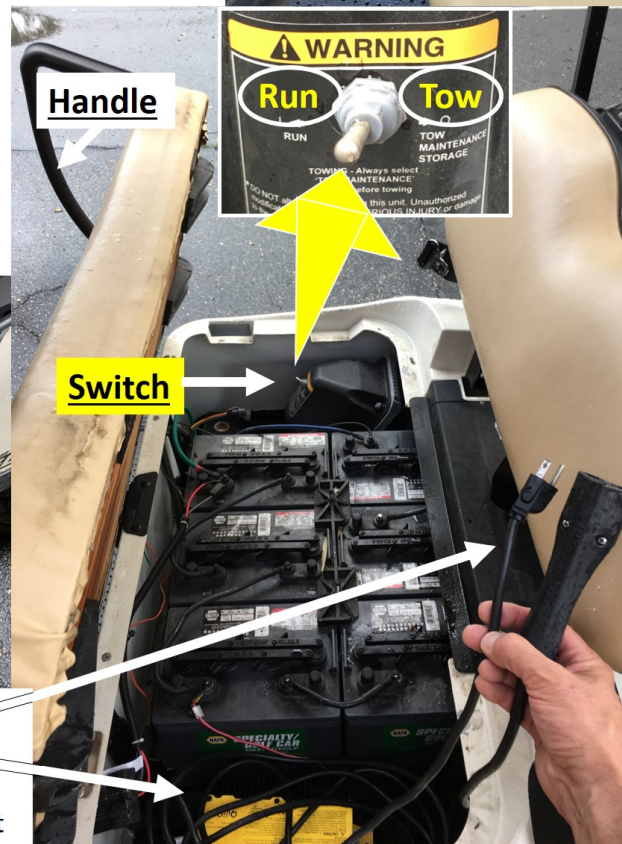
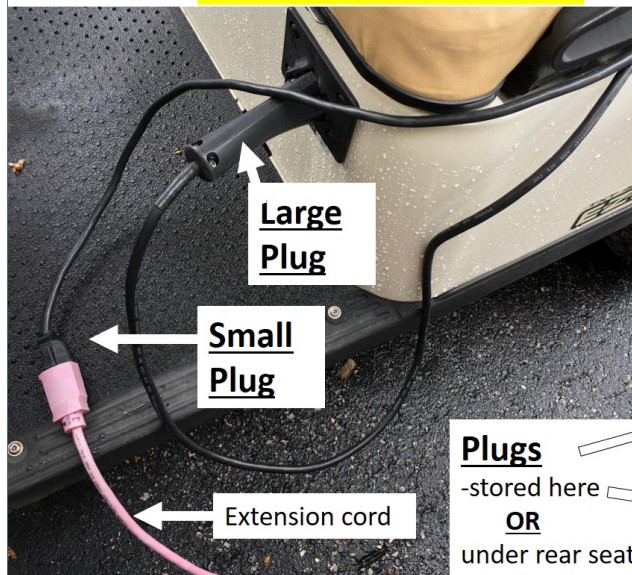
GOLF CART CHARGING

At the end of **each** day of use please:

- use handle to lift drivers seat up
- turn switch to "**TOW**" (right)
- large plug to cart, small plug to extension cord

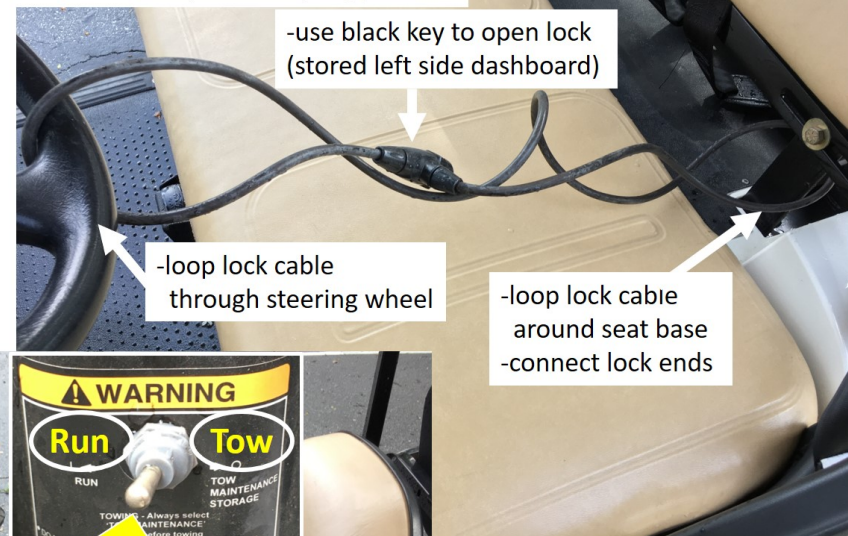
Before using again:

- remember** to turn switch back to "**RUN**" (left)



GOLF CART LOCKING

Please do this **whenever** stopped:



See
"Parking /
Facilities
Map"
for designated
parking spots

GOLF CART OPERATION

Please park and charge cart from the same space where you picked it up

Captain's
Landing

Waterfront Inn
Ocracoke Island, NC

IMPORTANT: (see **Golf Cart Charging**)

- If the cart won't go, take it out of **TOW!**
- When you're done, take it out of **RUN!**

Power

- insert silver key
- turn to right

Lock

- stored in here

Turn signal

- after turning,
manually turn off

Gear selector (2 possible locations)

- Forward: push down drivers side
- Reverse: push down passenger side
(safety alarm sounds)
- Neutral: flat

Parking brake / brake

- use parking brake (pb) **whenever** stopped
- set pb by pushing hard until it clicks
- remove pb by tapping accelerator

Accelerator pedal

- tap to remove parking brake
- pedal is sensitive (push carefully)